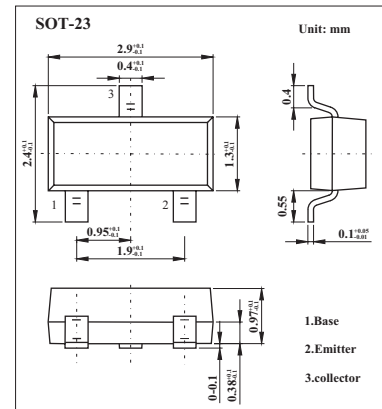
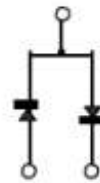


Switching Diode

DA204K

Features

- Small mold type.
- High reliability.



Absolute Maximum Ratings $T_a = 25$

Parameter	Symbol	Rating	Unit
Peak reverse voltage	V_{RM}	20	V
DC reverse voltage	V_R	20	V
Peak forward current	I_{FM}	200	mA
Mean rectifying current	I_o	100	mA
Surge current (1 μ s)	I_{surge}	300	mA
Power dissipation	P_d	200	mW
Junction temperature	T_j	150	
Storage temperature	T_{stg}	-50 to 150	

Electrical Characteristics $T_a = 25$

Parameter	Symbol	Test conditons	Max	Unit
Forward voltage	V_F	$I_F=10mA$	1.0	V
Reverse current	I_R	$V_R=15V$	0.1	μA
Capacitence between terminals	C_t	$V_R=6V, f=1MHz$	4.0	pF

Marking

Marking	K
---------	---